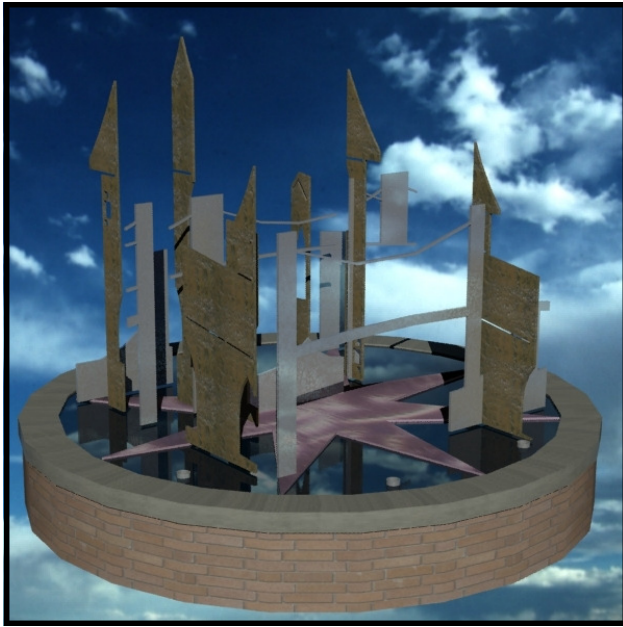


Owosso Fountain Design Proposal



When viewed at an oblique angle the fountain appears to be nothing more than a series of random shapes.

Our feeling is that the city needs an iconic fixture that will create special memories that people will carry with them. We want the experience of Owosso to be something that people talk about long after they have left. This one of a kind fountain experience should be something that will draw additional visitors for years to come. This “cool factor” is accomplished by relying on an optical trick that makes use of a series of seemingly unrelated shapes to create a unique image when viewed at a specific angle. In this case I have chosen Curwood castle and the bridge by the castle, but any other image is possible. These are images found along the river which ties together the water

theme of the fountain. A third image that would be seen from above is very easy to implement and could contain a message like the city name or logo. These shapes will also be cast as ever changing shadows, throughout the day and the year.

The shadows from the shapes can also be used as a kind of sun dial. The sun is extremely predictable and the shadows can be used to mark time and events so that the site can further develop over occasion. The star shape at the bottom is intended to reinforce the position and orientation of the fountain with compass directions. We can even use this information to create unique shapes with the shadows at specific times on specific days. Some of these will be planned but due to the variety of sculptural forms other interesting shapes will inevitably appear. Spending more time on designing, or discovering, surprising “Easter eggs” generally makes the whole experience more intriguing and satisfying. We feel that this fits in well with the Victorian spirit of interesting puzzles and surprises.



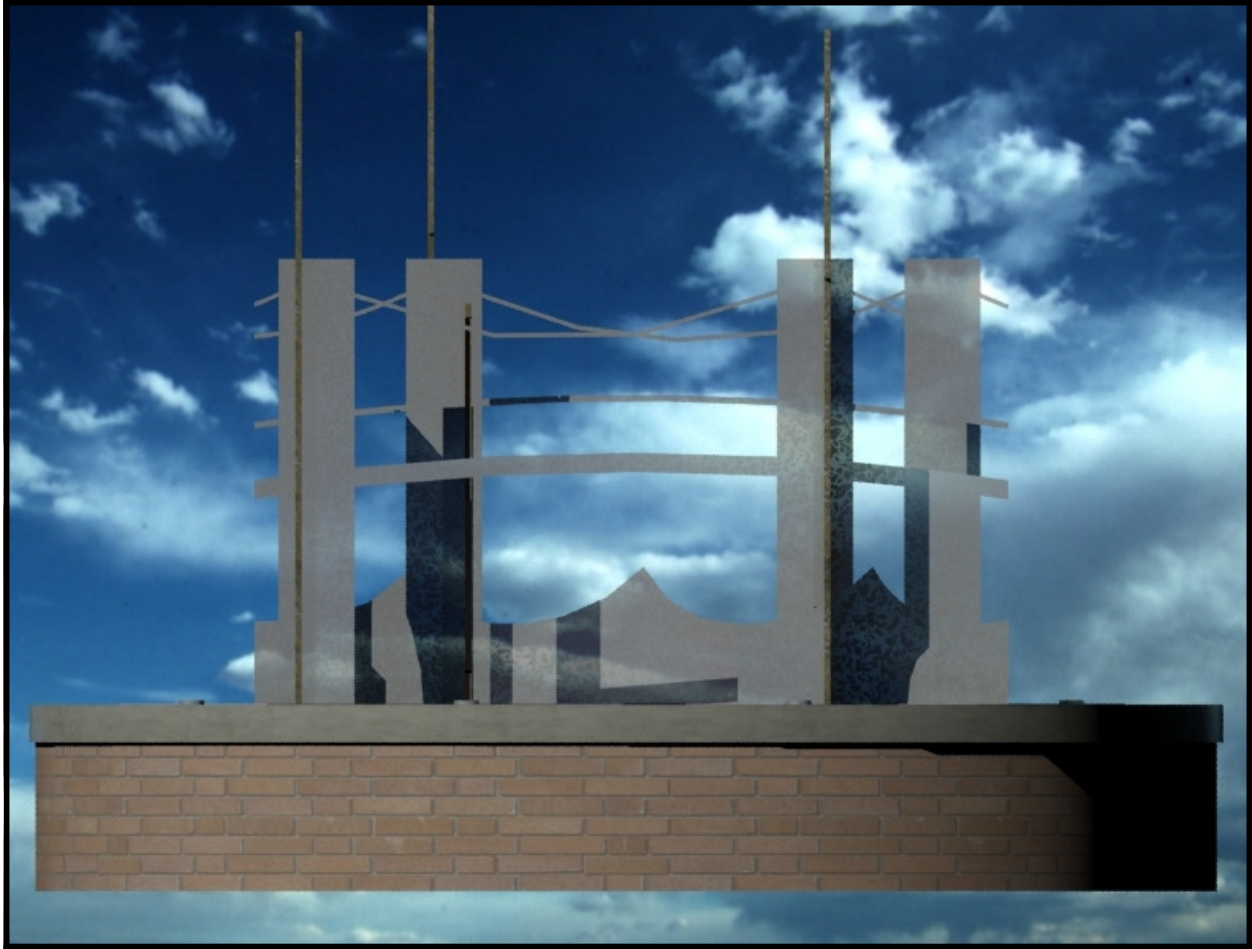


When viewed straight on the fragmented pieces of the sculpture turn into an easily recognizable image, in this case, Curwood castle.

Lighting will be from eight fountain nozzles that will shoot arcs of water colored by LED's so that the color and the timing of the water sprays can be changed. The spray would be sporadic or variably timed so as not to interfere with the optical illusions but active enough to keep an active spray on hot summer days.

We have tried to do all of this with maximum efficiency by making the sculpture out of one

of the least expensive materials available, steel. Not only is steel fairly inexpensive but it can be made into a wide variety of shapes, and it can be made locally. The material is also extremely strong and resistant to freezing and other forms of abuse. The sculpture will be large enough to just fit within the brick base so that curious hands will be able to touch it and the tactile nature of the material can be appreciated. The concept is to



Looking 90 degrees from the previous image the castle image turns into the bridge.

make the entire thing out of plate steel that can be easily cut and then welded back together in place.

The fountain should not require much maintenance over its life, which should be 50 years or more, but if a part should rust through or become damaged a new one can easily be welded into place. The water should be drained in the depths of winter to prevent damage to the concrete but the remaining sculpture should provide continued interest, including some very interesting snow drifts in winter.

The cost of the project is estimated to be about:

\$500 for additional design work

\$14,000 for steel cutting and installation

\$4,500 for lights, pumps and controls

We thank you very much for your consideration and continuing support.

Jeff Scott Peltier, AIA

For

TEaM Design

989-413-7916